

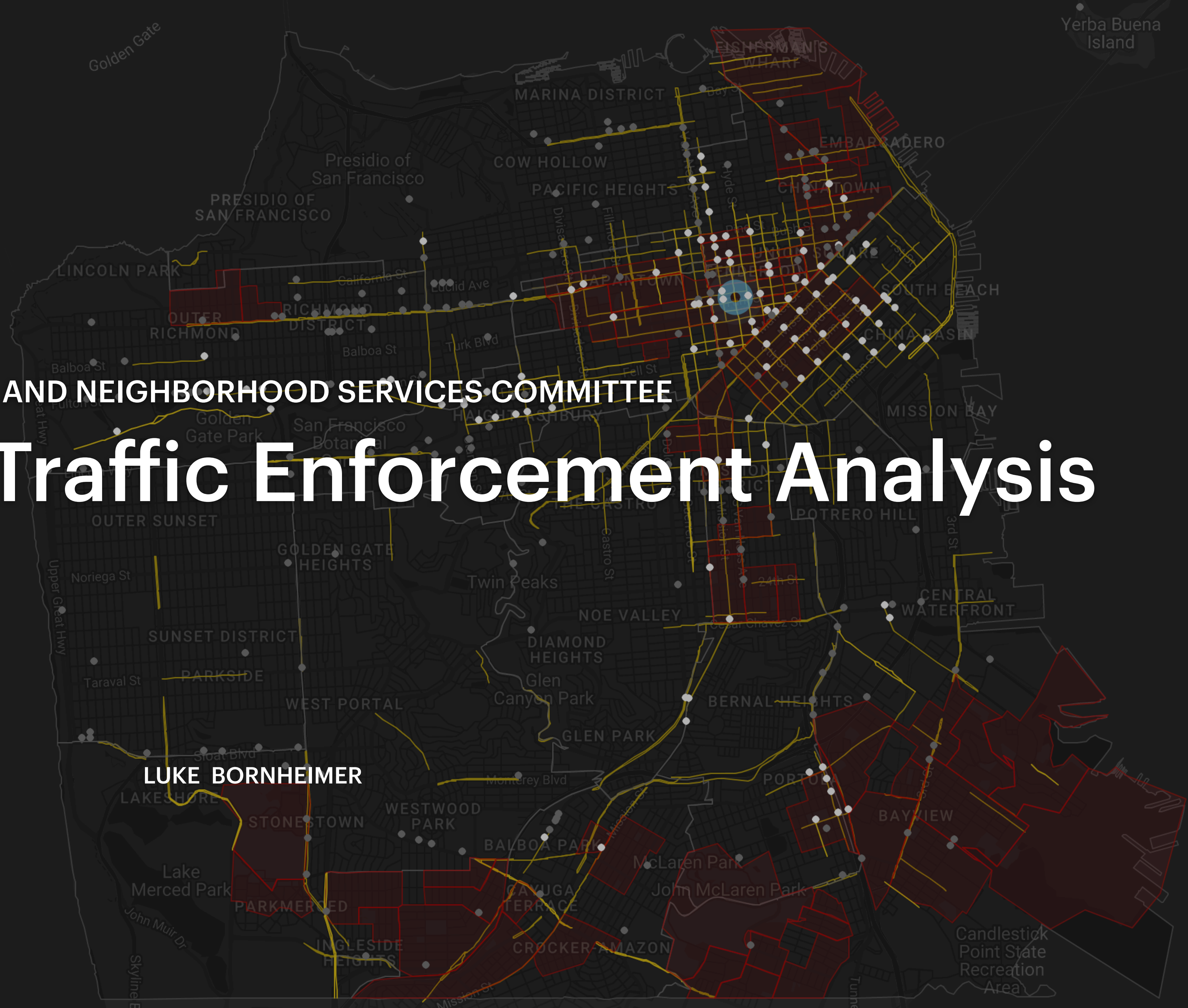
OCTOBER 2022

PUBLIC SAFETY AND NEIGHBORHOOD SERVICES COMMITTEE

# SFPD Traffic Enforcement Analysis

STEPHEN BRAITSCH

LUKE BORNHEIMER





SFPD TRAFFIC ENFORCEMENT ANALYSIS  
ABOUT US



**Luke Bornheimer**

Community organizer, advocate, and dad.  
Advocate for safe streets, sustainable  
transportation, and community spaces.

[CommunitySpacesSF.com](http://CommunitySpacesSF.com)



**Stephen Braitsch**

Data analyst, software engineer and graphic  
designer. Activist for healthy and  
environmentally sustainable transportation.

[TranspoMaps.org](http://TranspoMaps.org)

SFPD TRAFFIC ENFORCEMENT ANALYSIS  
THE PROBLEM

**244**

Motor vehicle related deaths  
since Vision Zero signing

**26K+**

Motor vehicle related injuries  
since Vision Zero signing

**~50%**

Percentage of residents  
who cannot or don't drive

**EVERY 3.19 HOURS**

A driver crashes their vehicle and  
injures someone in San Francisco

**EVERY 12.79 DAYS**

San Francisco loses someone  
to motor vehicle violence

# 64,200

## Moving Violation Citations

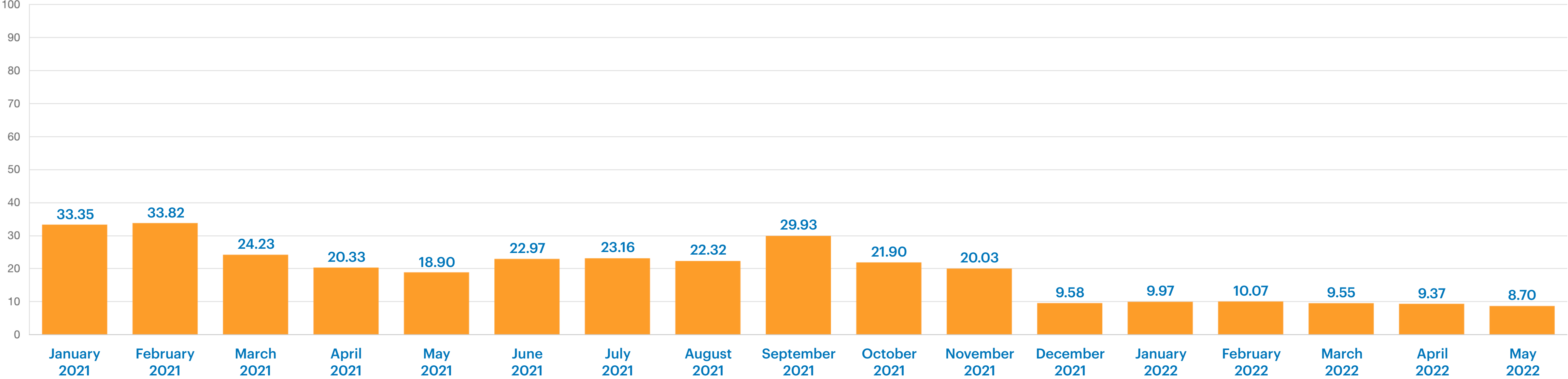
September 27th 2017 – May 23rd 2022





# Average Number of Citations Per Day

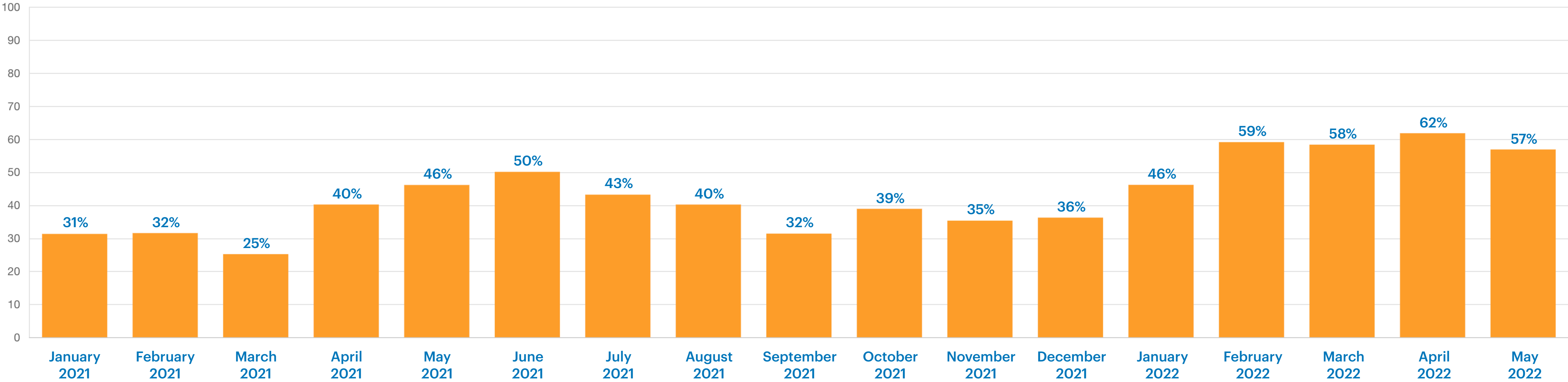
# 19.30



[HTTPS://TRANSPOMAPS.ORG/SAN-FRANCISCO/CA/SFPD-TRAFFIC-ENFORCEMENT](https://transpomaps.org/san-francisco/ca/sfpd-traffic-enforcement)

# Percentage of Citations that are “Focus on the Five” Citywide

# 43%

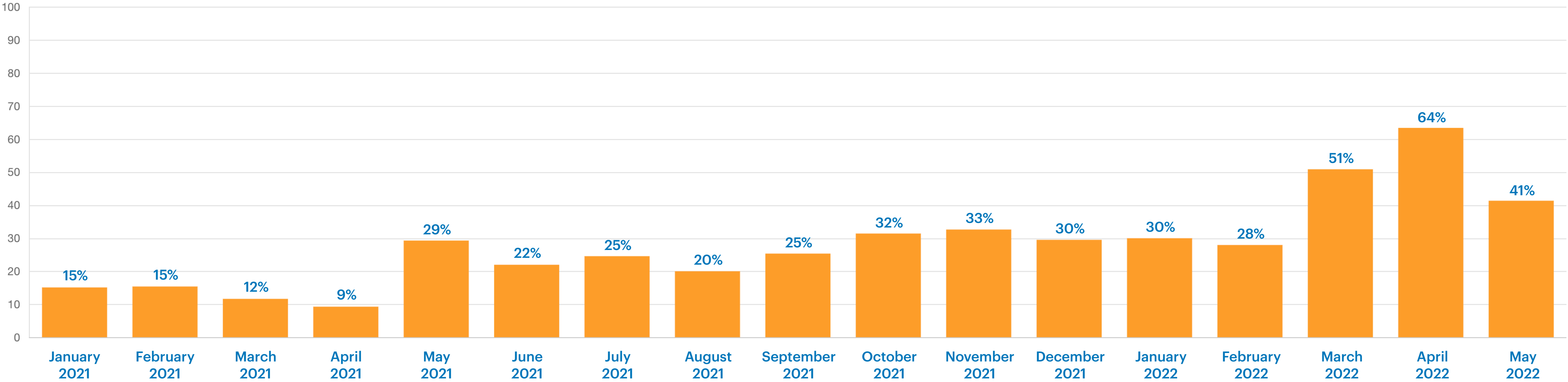


[HTTPS://TRANSPOMAPS.ORG/SAN-FRANCISCO/CA/SFPD-TRAFFIC-ENFORCEMENT](https://transpomaps.org/san-francisco/ca/sfpd-traffic-enforcement)



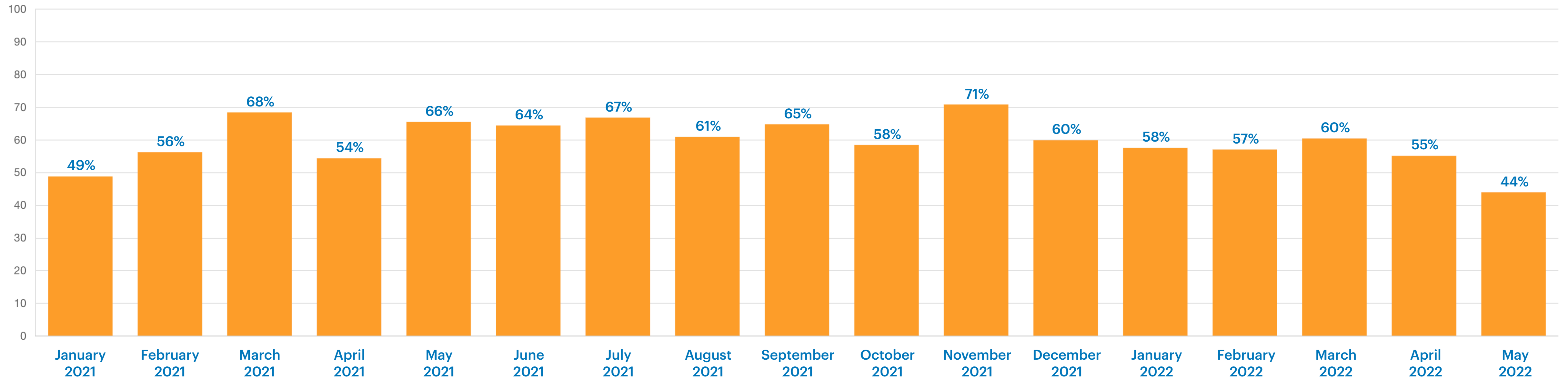
# Percentage of Citations that are “Focus on the Five” within Equity Priority Communities

# 28%



[HTTPS://TRANSPOMAPS.ORG/SAN-FRANCISCO/CA/SFPD-TRAFFIC-ENFORCEMENT](https://transpomaps.org/san-francisco/ca/sfpd-traffic-enforcement)

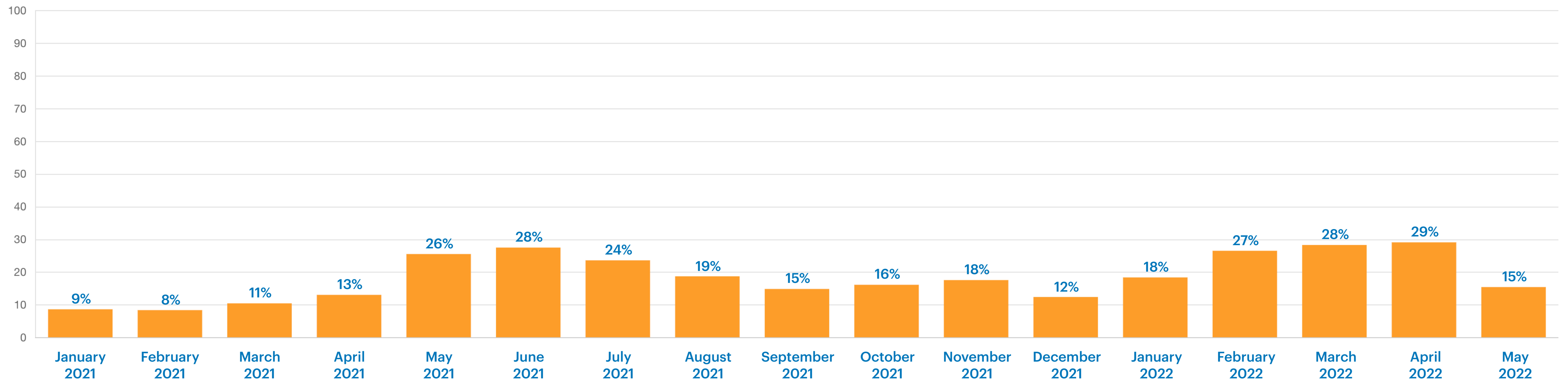
# Percentage of Citations on The High Injury Network **60%**



[HTTPS://TRANSPOMAPS.ORG/SAN-FRANCISCO/CA/SFPD-TRAFFIC-ENFORCEMENT](https://transpomaps.org/san-francisco/ca/sfpd-traffic-enforcement)



# Percentage of Citations that are “Focus on the Five” & on The High Injury Network **18%**



[HTTPS://TRANSPOMAPS.ORG/SAN-FRANCISCO/CA/SFPD-TRAFFIC-ENFORCEMENT](https://transpomaps.org/san-francisco/ca/sfpd-traffic-enforcement)

SFMTA Parking Enforcement Analysis  
Coming Soon  
Contact Us For More Info





# Recommendations





## SFMTA

- Increase funding & staffing on pedestrian & bike safety improvements
- Streamline design & implementation processes by limiting public outreach
- Install more red-light cameras on the High-Injury Network

## Board of Supervisors / Mayor / Assembly / Senate

- Secure & provide funding for street safety improvements
- Secure funding & political support for red-light cameras
- Support SFMTA projects, especially when they increase safety



## SFMTA

- Publish data on infrastructure & safety improvements on a monthly basis. Specifically include what was installed and where. (e.g. # of K-rails, # of soft-hit posts, # miles of red transit lanes, green bike lanes etc...)

## SFDPH / SFPD

- Upload crash data to DataSF every week
- Upload traffic enforcement data to DataSF every week

## Board of Supervisors / Mayor / Assembly / Senate

- Hold a monthly hearing with SFPD & SFMTA about traffic enforcement and infrastructure data

## Interagency (SFMTA / SFPD / SFDPH)

- Standardize data collection so all incidents include: date & time, geographic location (lat / long), license plate number and driver & crash victim demographics.
- Hire us to refresh the High Injury Network so it updates automatically as new crash data is available.

## SFMTA

- Install more red-light cameras citywide which are proven to reduce dangerous driving behavior and save lives.
- Use cameras to automatically issue illegal parking citations by mail so PCOs don't have to confront the driver.  
**Requiring PCOs to confront drivers strongly discourages them from issuing citations.**

## SFPD

- Prioritize enforcing “Focus on the Five” violations on the High Injury Network which is currently only ~18% of all citations citywide.
- Stop disproportionately targeting residents in Equity Priority Communities for traffic violations that do not affect public safety.

## Board of Supervisors / Mayor / Assembly / Senate

- Demand Automated Speed Enforcement pilot legislation be passed at state level.
- Design and propose an unarmed enforcement pilot similar to what is being explored in Berkeley.

SFPD TRAFFIC ENFORCEMENT ANALYSIS  
THANK YOU



Luke Bornheimer

CommunitySpacesSF.com  
luke@communityspacessf.com



Stephen Braitsch

TranspoMaps.org  
braitsch@transpomaps.org

DOWNLOAD THIS PRESENTATION AT [HTTPS://TRANSPOMAPS.ORG/SFPD-HEARING](https://transpomaps.org/sfpd-hearing)



SFPD TRAFFIC ENFORCEMENT ANALYSIS

# Appendix





## 25,962 Vehicle Related Injuries January 1st 2014 – June 30th 2022

**16,634**  
MILD

**7,047**  
MODERATE

**2,033**  
SEVERE

**248**  
FATAL

**EVERY 3.19 HOURS**

A driver crashes their vehicle  
and injures someone

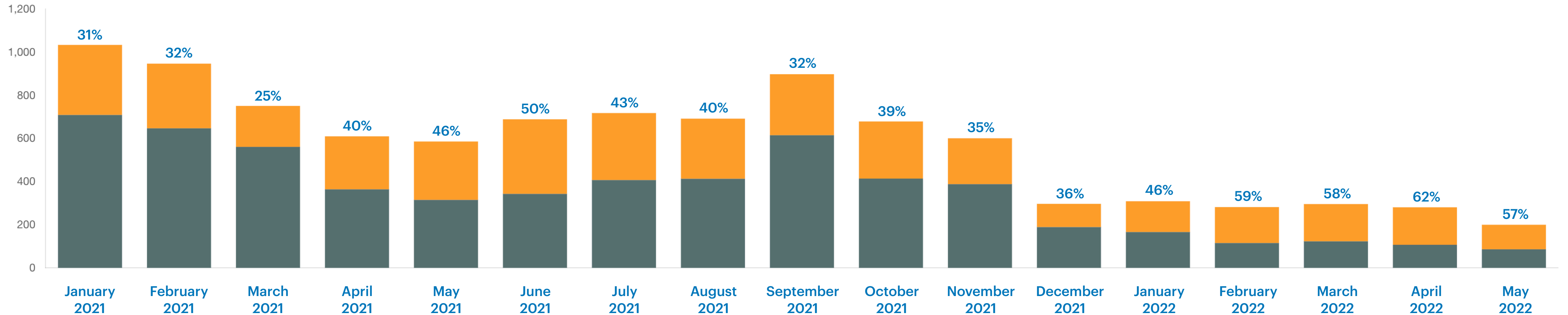
**EVERY 12.79 DAYS**

San Francisco loses someone  
to vehicle violence

[HTTPS://TRANSPOMAPS.ORG/SAN-FRANCISCO/CA/FATALITIES](https://transpomaps.org/san-francisco/ca/fatalities)

## Percentage of Citations that are "Focus on the Five"

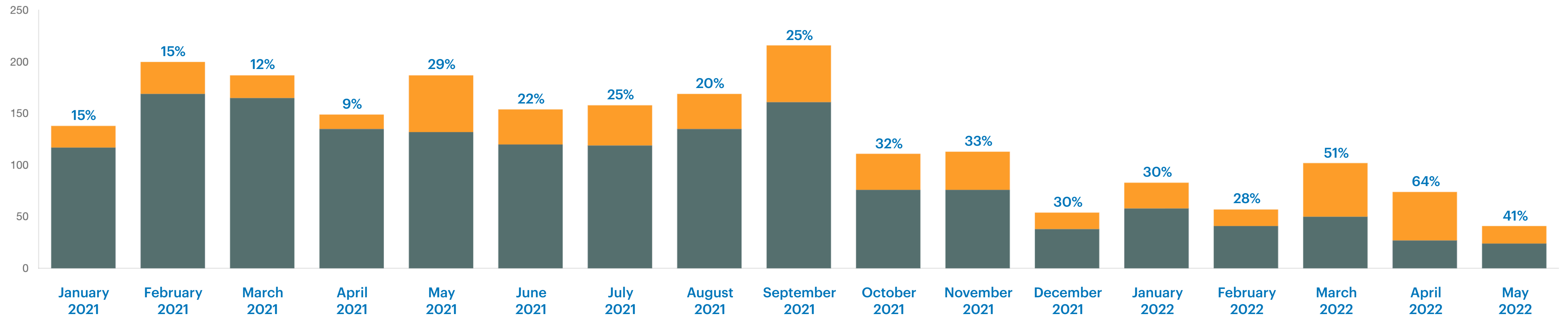
43%



[HTTPS://TRANSPOMAPS.ORG/SAN-FRANCISCO/CA/SFPD-TRAFFIC-ENFORCEMENT](https://transpomaps.org/san-francisco/ca/sfpd-traffic-enforcement)

# Percentage of Citations that are "Focus on the Five" within Equity Priority Communities

## 28%

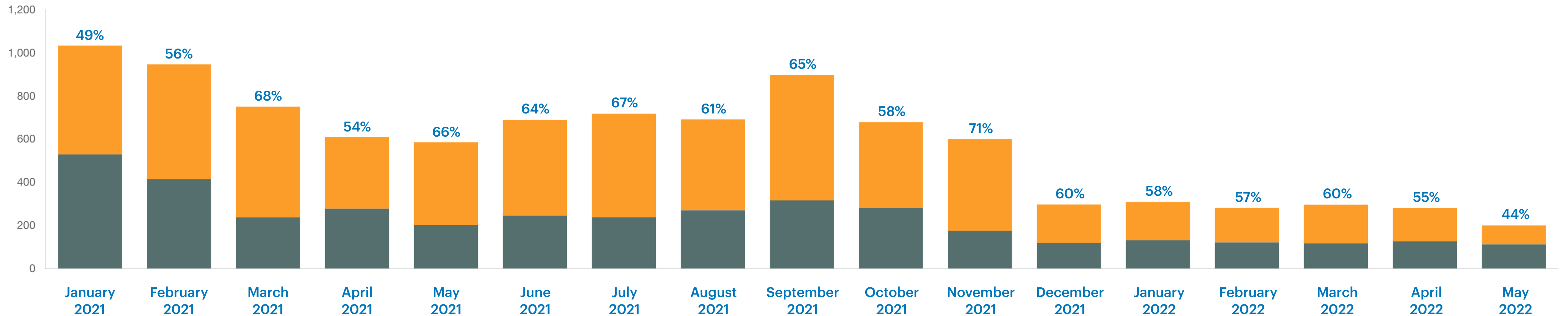


[HTTPS://TRANSPOMAPS.ORG/SAN-FRANCISCO/CA/SFPD-TRAFFIC-ENFORCEMENT](https://transpomaps.org/san-francisco/ca/sfpd-traffic-enforcement)



## Percentage of Citations on The High Injury Network

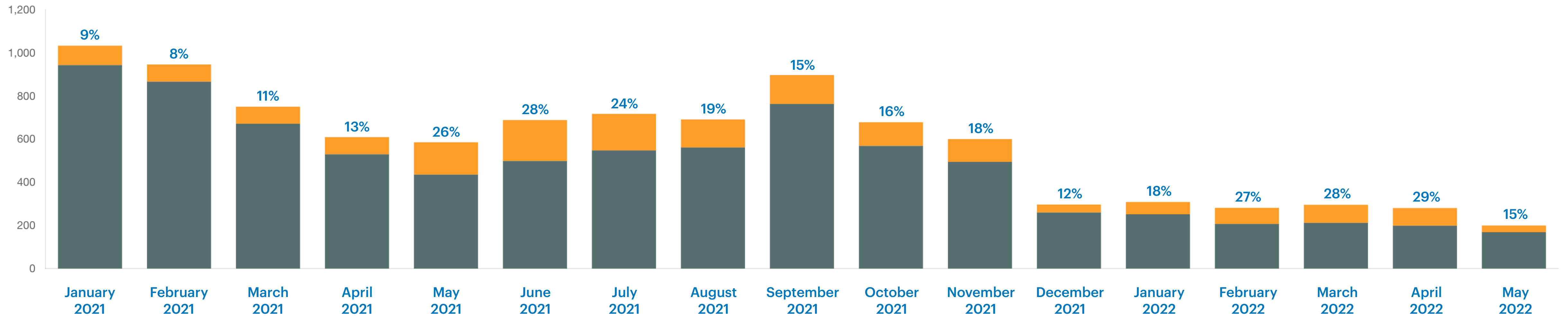
60%



[HTTPS://TRANSPOMAPS.ORG/SAN-FRANCISCO/CA/SFPD-TRAFFIC-ENFORCEMENT](https://transpomaps.org/san-francisco/ca/sfpd-traffic-enforcement)

# Percentage of Citations that are “Focus on the Five” & on The High Injury Network

# 18%



[HTTPS://TRANSPOMAPS.ORG/SAN-FRANCISCO/CA/SFPD-TRAFFIC-ENFORCEMENT](https://transpomaps.org/san-francisco/ca/sfpd-traffic-enforcement)